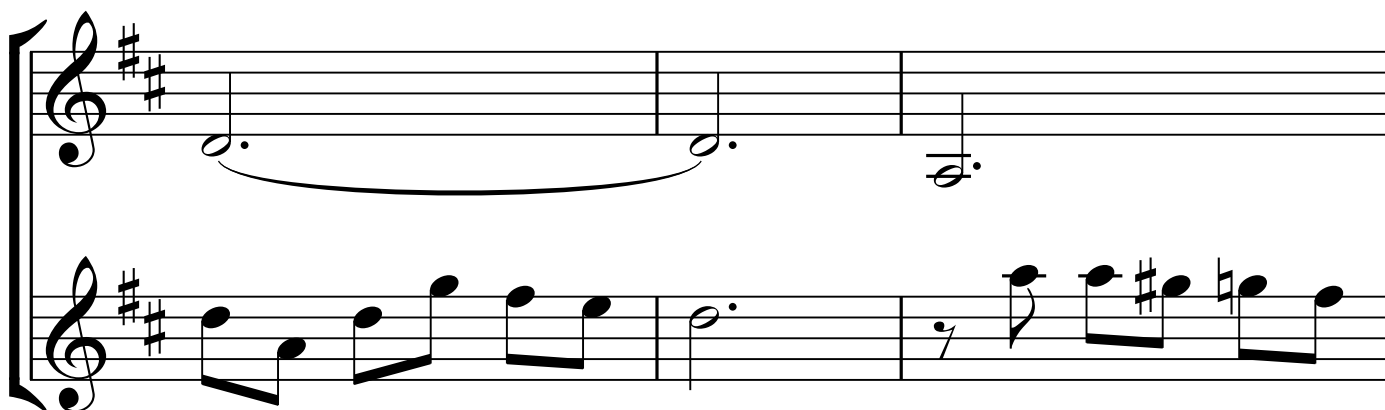
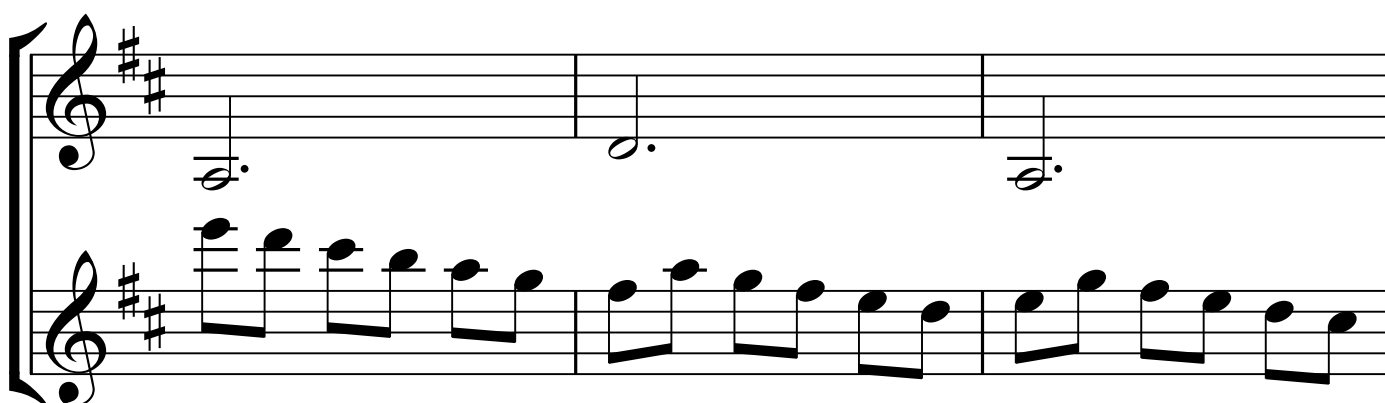
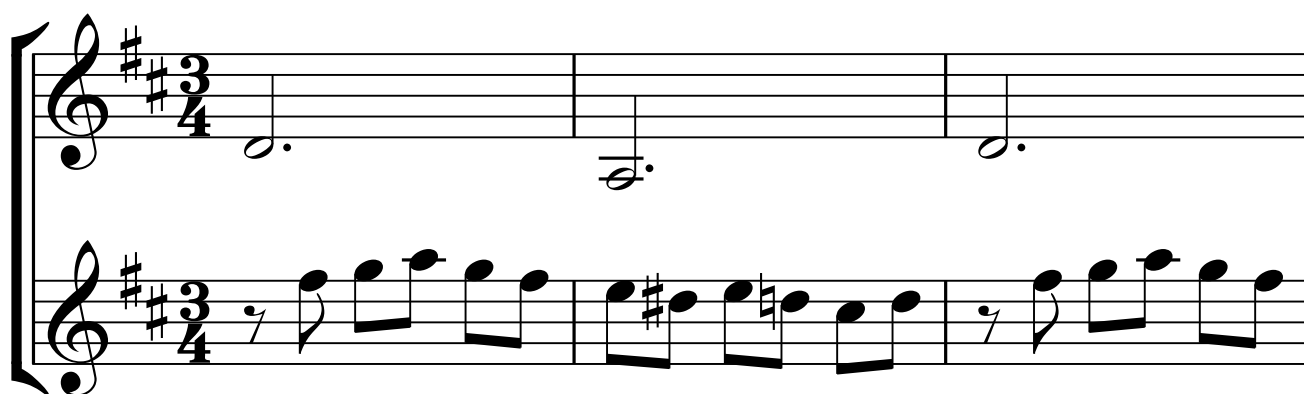


# Бас - Вальс

Э.Куфко



A musical score for the song "The Rose Tree". It consists of two staves. The top staff is in treble clef with a key signature of one sharp (F#) and a common time signature (C). It contains three measures: a half note G4, a half note A4, and a half note B4. The bottom staff is in treble clef with a key signature of one sharp (F#) and a common time signature (C). It contains three measures: a half note G4, a half note A4, and a half note B4. The notes are written on a five-line staff with a red line at the top.

A musical score for the song "The Rose Tree". It consists of two staves. The top staff is a treble clef with a key signature of one sharp (F#) and a time signature of 3/4. It contains three measures: a quarter note on G4, a half note on E4, and a quarter note on G4. The bottom staff is a treble clef with a key signature of one sharp (F#) and a time signature of 3/4. It contains three measures: a quarter note on G4, a half note on E4, and a quarter note on G4. The notes are written in a simple, clear font.

A musical score for the song "The Rose Tree". It consists of two staves. The top staff is in treble clef with a key signature of two sharps (F# and C#). It contains a melody starting on a dotted quarter note (G4), followed by a half note (A4), and then a dotted half note (B4) that spans across the second and third measures. The bottom staff is also in treble clef with the same key signature. It contains a melody starting on a quarter note (G4), followed by eighth notes (A4, B4, A4, G4), and then a dotted half note (B4) at the end. The music is written in a simple, clear style suitable for a children's songbook.